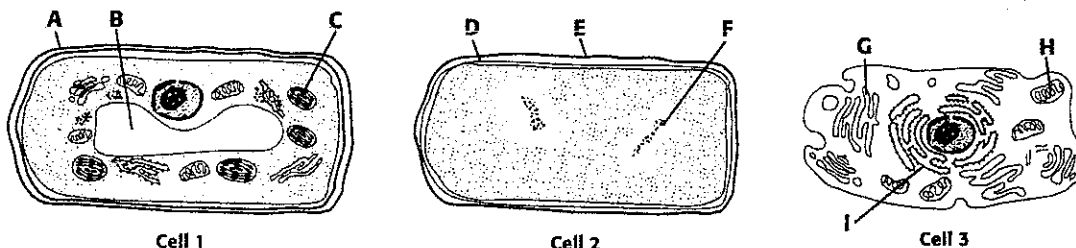


Skills Worksheet

Science Skills

INTERPRETING DIAGRAMS

Biology students were working on a class project. They prepared copies of transmission electron micrographs of a bacterium, a plant cell, and an animal cell for display in their classroom. Unfortunately, the pictures were not labeled and got mixed up. Help these students correctly identify the cells and cell structures. Use the figures below to answer questions 1–5.



In the space provided, write the names of each cell's labeled structures (A–I). Using this information, write the identity of each cell—bacterium, plant cell, or animal cell.

1. Cell 1 identity _____

A. _____

B. _____

C. _____

2. Cell 2 identity _____

D. _____

E. _____

F. _____

3. Cell 3 identity _____

G. _____

H. _____

I. _____

