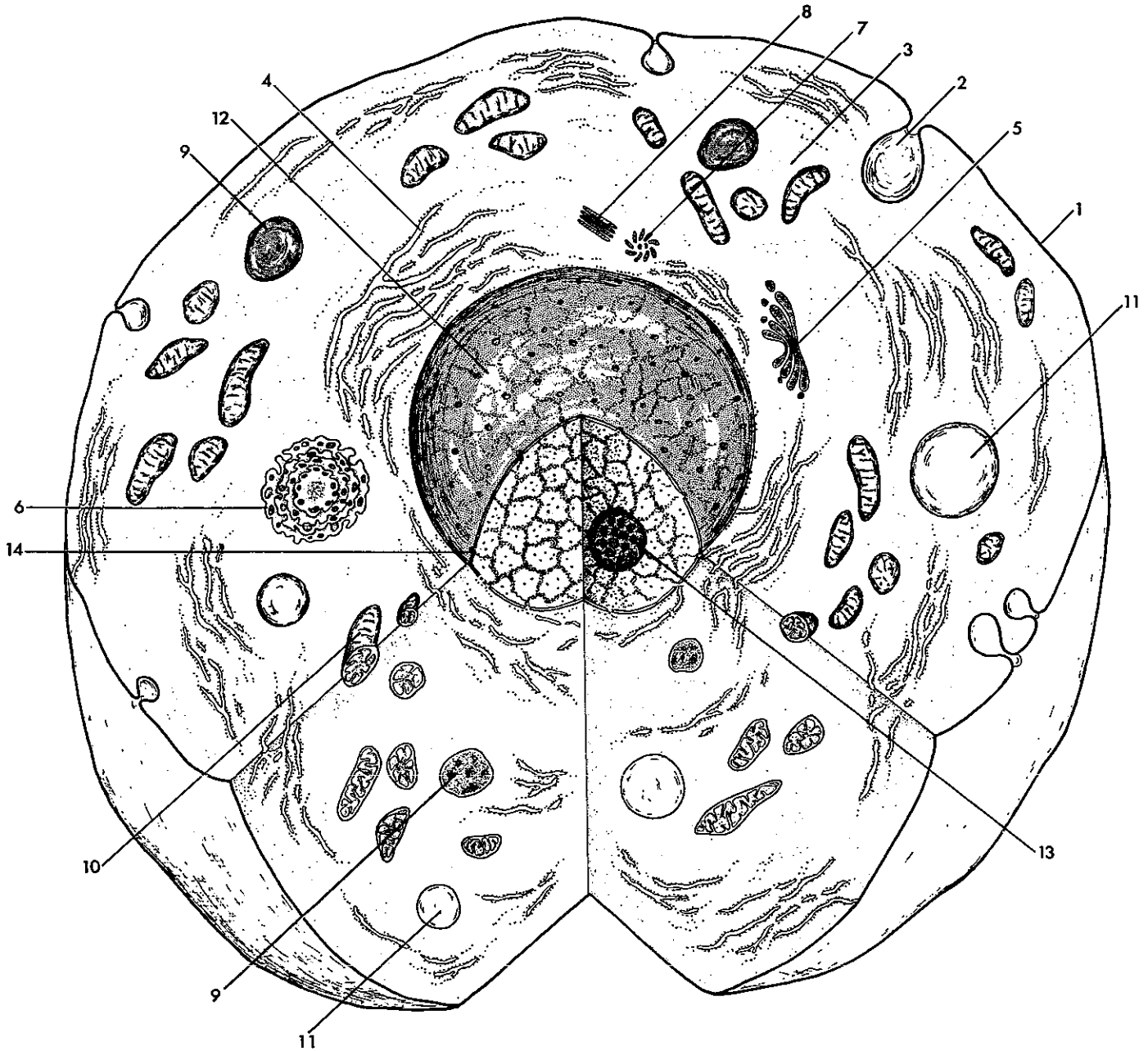


# ANIMAL CELL



- |                          |                      |
|--------------------------|----------------------|
| 1. Cell membrane         | 8. Centrosome (l.s.) |
| 2. Pinocytic vesicle     | 9. Lysosome          |
| 3. Cytoplasm             | 10. Mitochondrion    |
| 4. Endoplasmic reticulum | 11. Vacuole          |
| 5. Golgi body (section)  | 12. Nucleus          |
| 6. Golgi body            | 13. Nucleolus        |
| 7. Centrosome (c.s.)     | 14. Nuclear membrane |

Carolina Biological Supply Company, Burlington, North Carolina 27215

Printed in U.S.A. © 1966 Carolina Biological Supply Company

Reproduction of all or any part of this sheet without written permission from the copyright holder is unlawful.

Bioreview® Sheet  
3950